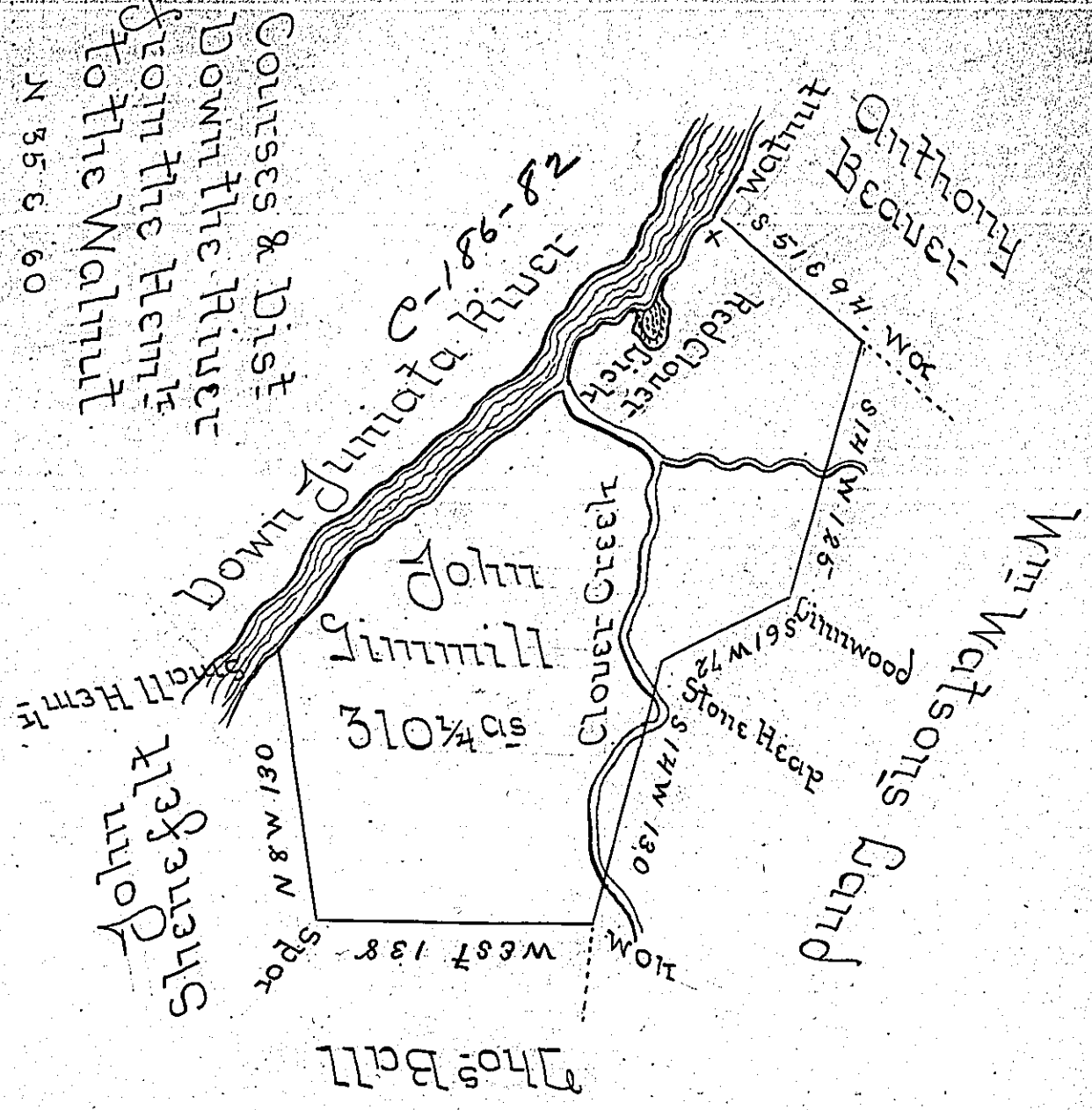


Courses & Dist  
Down the River  
From the Hemit  
To the Walnut

N 55 E 60
N 51 E 140
N 34 E 40
N 64 E 55
N 15 E 28
<hr/>
303



Situate in Woodberry Township Huntingdon County  
Containing three hundred and ten and one fourth of an  
acre and the usual allowance of six per Cent for Roads  
&c. Surveyed the 1<sup>st</sup> Day of April 1806 in pursuance of a  
Warrant dated the 5<sup>th</sup> Day of August 1763 -  
Note - a survey was made previous to the Revolution  
while Richard Nea had the District the lines of which  
have now been found taking in the above land

John Canan D.S.

Samuel Cochran Esquire }  
Surveyor General }

IN TESTIMONY that the above is a copy of the original remaining on file in  
the Department of Internal Affairs of Pennsylvania, made  
conformably to an Act of Assembly approved the 16th day of  
February, 1833, I have hereunto set my Hand and caused  
the Seal of said Department to be affixed at Harrisburg,  
this thirteenth day of January 1905.

*David P. Pennington*  
Secretary of Internal Affairs